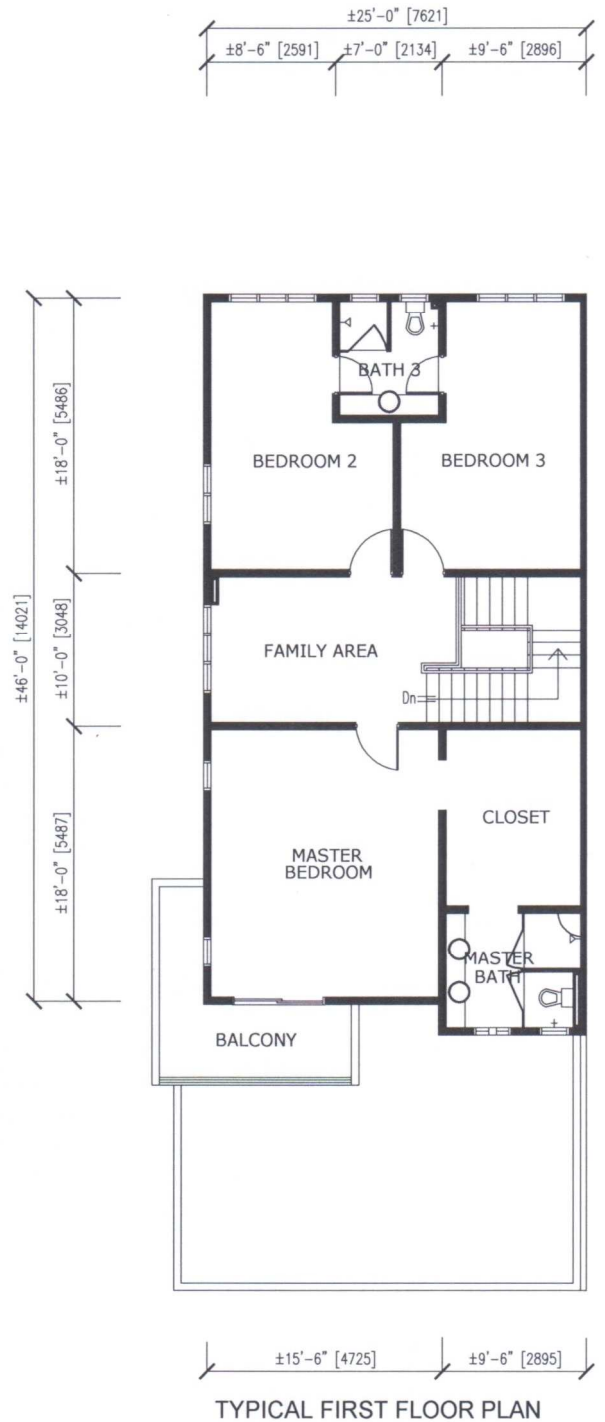
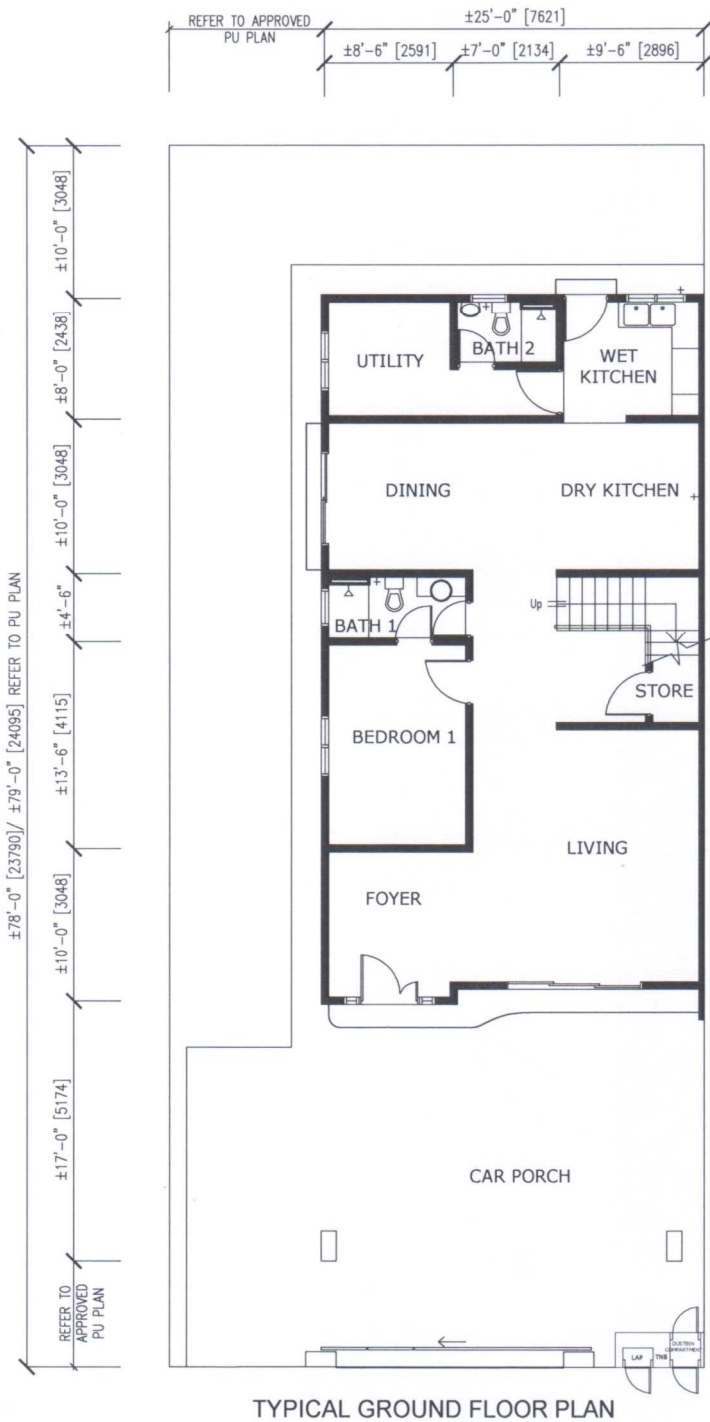


# BANDAR SERI BOTANI

ZONE: SERI PALMA - PH2.7A(1) (28 UNITS DOUBLE STOREY SEMI-DETACHED HOUSES & 1 UNIT DOUBLE STOREY BUNGALOW HOUSES)



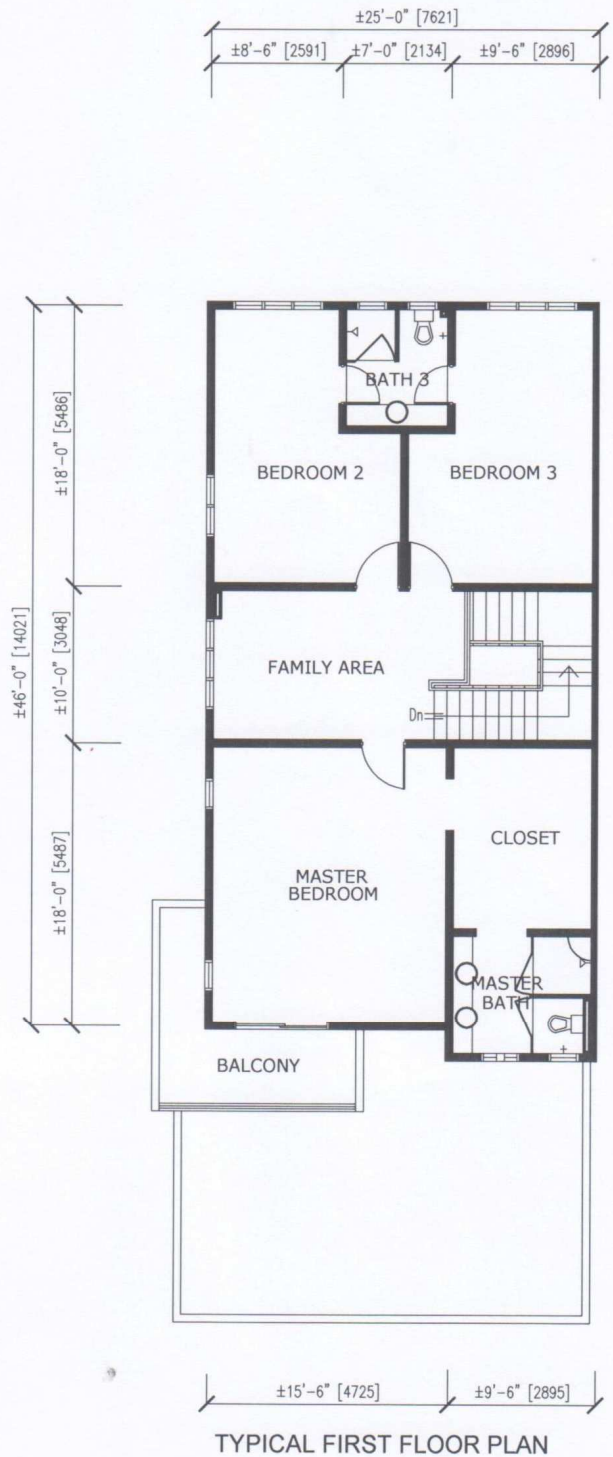
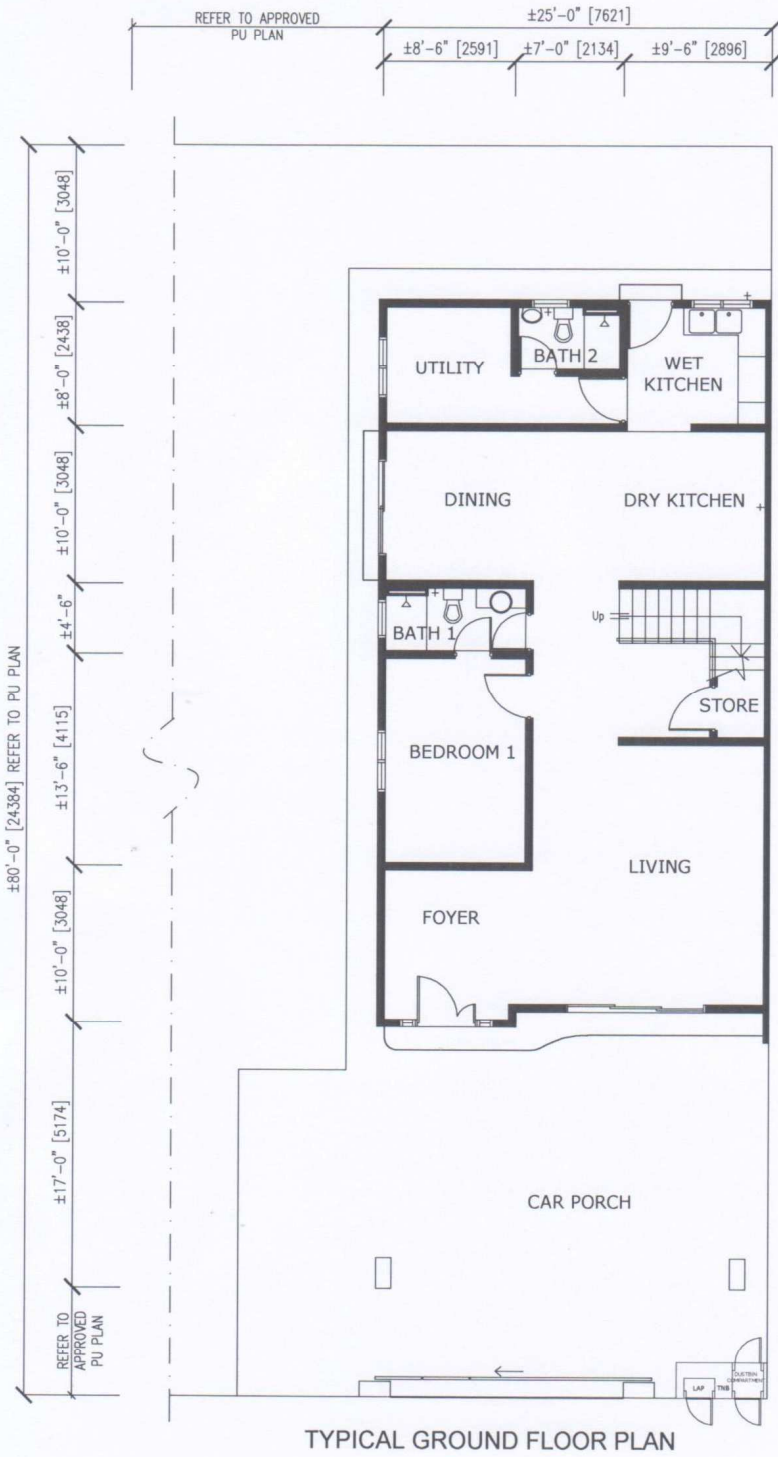
- 11 UNITS - TYPE A1
- LOT SIZE - 35' x 78'/ 79' (STANDARD LOT)
- BUILT-UP - ±2,350 sqft.
- ON LOT NOS - LOT 331485-331495

DATE: 11th FEB 2013

\*All plans, informations & specifications of the building contained herein may subject to changes and/ or amendments as may be required by the relevant authorities or project consultants.

# BANDAR SERI BOTANI

ZONE: SERI PALMA - PH2.7A(1) (28 UNITS DOUBLE STOREY SEMI-DETACHED HOUSES & 1 UNIT DOUBLE STOREY BUNGALOW HOUSES)



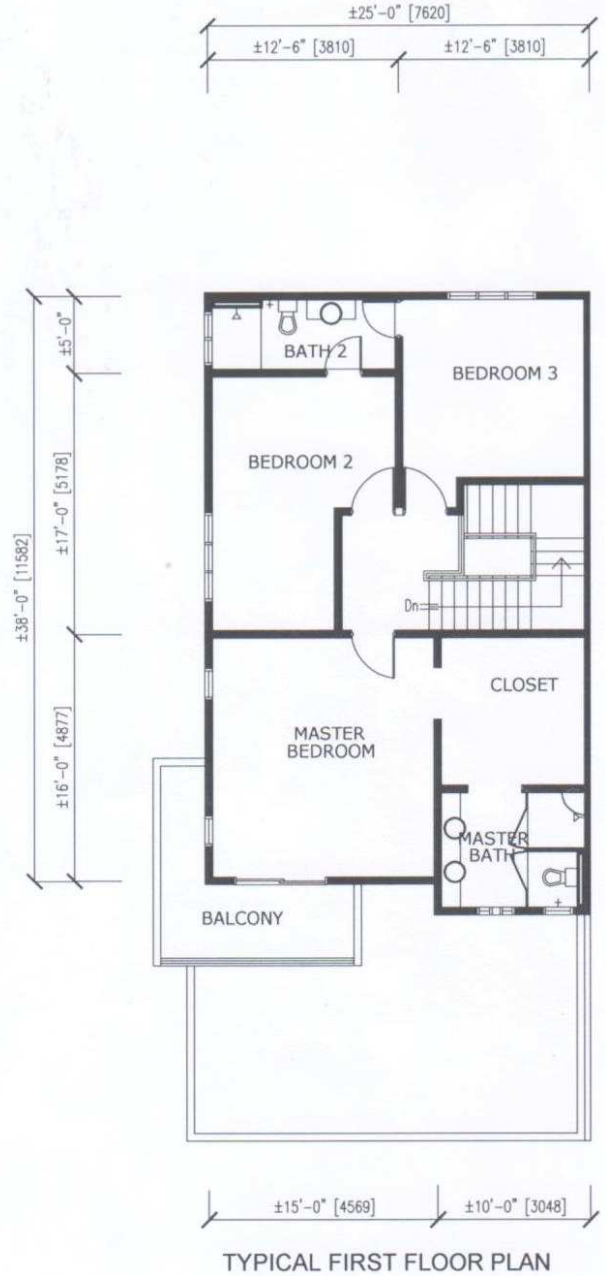
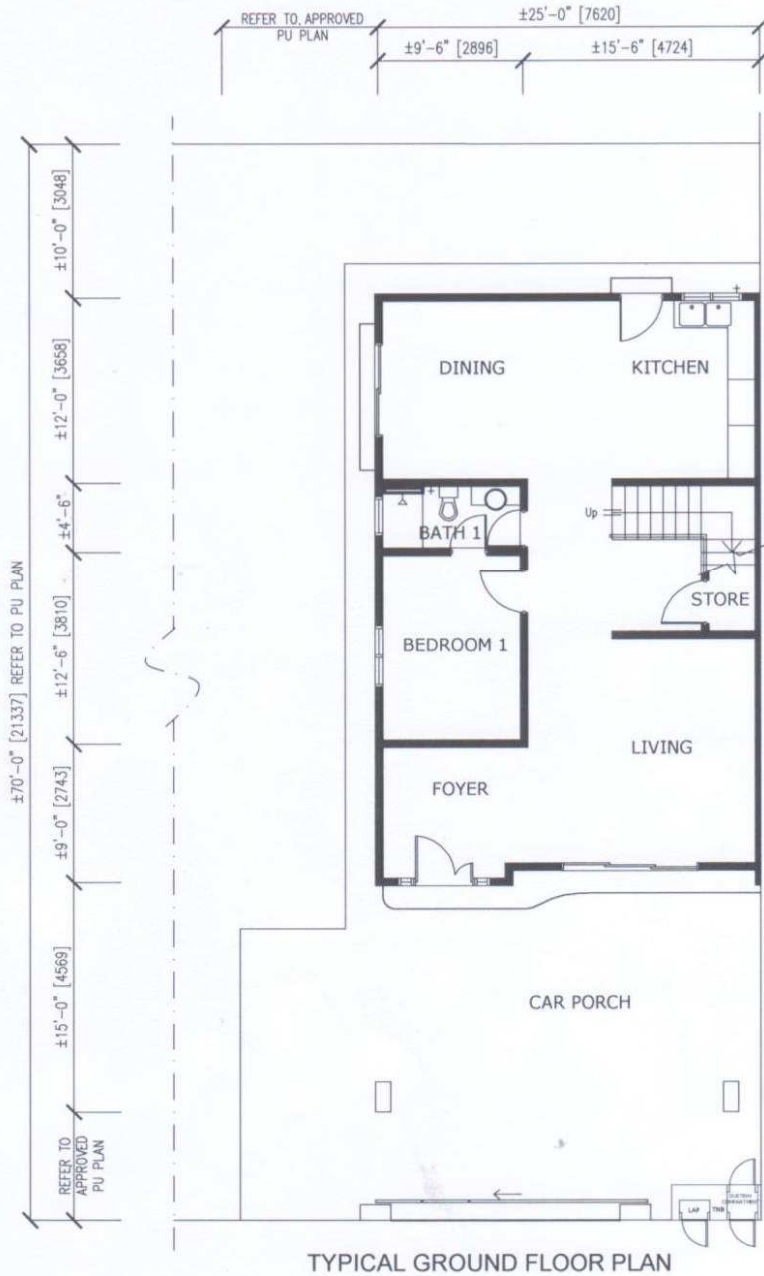
- 9 UNITS - TYPE A2
- LOT SIZE - REFER TO APPROVED PU PLAN
- BUILT-UP - ±2,350 sqft.
- ON LOT NOS - LOT 331476-331484

DATE: 11th FEB 2013

\*All plans, informations & specifications of the building contained herein may subject to changes and/ or amendments as may be required by the relevant authorities or project consultants.

# BANDAR SERI BOTANI

ZONE: SERI PALMA - PH2.7A(1) (28 UNITS DOUBLE STOREY SEMI-DETACHED HOUSES & 1 UNIT DOUBLE STOREY BUNGALOW HOUSES)



- 1 UNIT - TYPE B2
- LOT SIZE - REFER TO APPROVED PU PLAN
- BUILT-UP - ±1,945 sqft.
- ON PT NO - PT 19611

DATE: 11th FEB 2013